



**Church**

**Safeguarding Policy**

**2020**

**Contents:**

Contents:	1
Details of your Church:	2
Introduction: National Leadership Team Statement on Safeguarding: .....	4
Church Statement: Our Commitment to Safeguarding: .....	6
Safeguarding Procedures:	11
Practice Guidance:	15
Appendix A: Terminology	24
Appendix B: Statutory Definitions of Abuse (Children) .....	26
Appendix C: Signs and Symptoms of Abuse (Children).....	29
Appendix D: Statutory Definitions of Abuse (Adults) .....	31
Appendix E: Signs of Possible Abuse (Adults) .....	33
Appendix F: Responding to Safeguarding Concerns (Children) .....	37
Appendix G: Responding to Safeguarding Concerns (Adults).....	39

**Details of your Church:**

Name of Church: Lifecentral Church

Address: Little Cornbow  
Halesowen  
B63 3AJ

Tel No: 0121 501 3542

Email address (general): [info@lifecentralchurch.org.uk](mailto:info@lifecentralchurch.org.uk)

Email address (safeguarding) [Sandra.andrew@lifecentralchurch.org.uk](mailto:Sandra.andrew@lifecentralchurch.org.uk)

Charity Numbers for EFGA Elim Churches: 251549 England and Wales, SC037754 Scotland

[ECI members please insert your Charity Number if different: ]

Insurance Company: Congregational (Integra Insurance Solutions Ltd.)

The Local Safeguarding Partners (Local Safeguarding Children Board or equivalent) for protecting children can be contacted:

Dudley Council Multi-Agency Support Hub (MASH) 0300 555 0050 (Mon-Fri 9-5)

Dudley Council Out of Hours Emergency Duty Team 0300 555 8574 (other times)

The Safeguarding Adults Board (or equivalent) can be contacted:

Dudley Council Adult Safeguarding Out of Hours (Emergency Duty Team): 0300 555 0055 select option 1  
0300 555 8574

Contact details for Birmingham, Dudley, Sandwell, Staffordshire and Worcestershire can be found in Appendix H.

Police Child Protection Team for Dudley, part of Dudley Multi-Agency Support Hub MASH

Contact details: 101 (extension 8516572)

**Introduction:**

**National Leadership Team Statement on Safeguarding:**

The National Leadership Team of Elim are committed to creating healthy churches and safe spaces for all. We recognise the ways in which children and adults can be at risk of harm or abuse, so endeavour to create a culture to minimise opportunities for abuse to occur. This requires having a safeguarding policy which sets out clearly defined principles, standards and guidelines required to keep everyone safe. The policy includes procedures for reporting suspicions or allegations of abuse, as well as practical guidance for safer recruitment, and church wide safeguarding training and supervision for all individuals working with children and adults at risk.

We recognise the need to provide a safe and caring environment for all including children, young people and adults at risk of harm. Children rely on adults to keep them safe, therefore all our churches working with children, either directly or indirectly, should be committed to safeguarding children in their care. We seek to do this by providing a safe, stable, and nurturing environment where children can reach their full potential. Similarly, within our churches there are adults in need of protection, care and support due to vulnerability, whether that is a permanent or temporary state. We are aware too that within our churches there are relationships of trust, which flourish best within healthy churches and environments, where there is openness, transparency and accountability.

As a denomination Elim is seeking to build healthy churches in the UK and across the world consisting of a rich diversity of cultures that are open to people of all nationalities, ages and backgrounds. Our churches meet together to worship God and to care for one another whilst also seeking to reach out to people in their immediate community, the wider area and across the world. We do this through an extensive variety of activities which may include, among other things; Sunday services, small groups, educational programmes, medical aid, alleviation of poverty and activities for the elderly, adults at risk of harm, children and young people. As part of our mission we also have departments who seek to prepare and equip people for ministry in the local church, the workplace and for overseas mission.

We firmly believe that safeguarding is everyone's responsibility, and all involved in the life of our churches and activities have a role to play in keeping children, young people and adults safe.

### **One Church Safeguarding Policy**

This safeguarding policy covers the care and protection of children and adults, through the multiplicity of ways people connect with Elim churches, missions, groups and activities; including through digital platforms online such as social networking services and social media.

### **Statement of our commitment to safeguarding**

Reflecting our mission of being 'One Movement, One Mission' we have produced this overarching safeguarding policy for the protection, care and well-being of everyone across all Elim activities in recognition that we work with children and young people, with adults who may be vulnerable or at risk, with victims and survivors of abuse and neglect and with those who pose a risk of harm to children and adults.

### **Contacting the National Safeguarding Coordinator**

It is imperative that contact be made with the National Safeguarding Coordinator when a local church is faced with any safeguarding issue. They are available in the first instance for advice and support. They should also be contacted where any safeguarding concern has implications for the reputation or good standing of Elim. This is to ensure that any response is open, transparent and involves the statutory safeguarding authorities; it also provides for the necessary quality assurance required by Elim International Centre.

This is for the purpose of ensuring that the appropriate course of action has been taken. Where a safeguarding matter involves a church worker, then such a response may include initiating complaints or disciplinary procedures in addition to following safeguarding protocols.



**Chris Cartwright**

**General Superintendent**

## **Church Statement: Our Commitment to Safeguarding:**

As the Leadership, we recognise the need to provide a safe and caring environment for children, young people and adults. We recognise the importance of our ministry with children, young people and adults and our responsibility to protect everyone entrusted to our care. We believe every child should be valued, safe and happy. We want to make sure that children we have contact with know this and are empowered to tell us if they are suffering harm. All children and young people have the right to be treated with respect, to be listened to and to be protected from all forms of abuse. Adults in our church should be enabled to live fulfilling, autonomous lives, and should have access to every aspect of church life. The care and protection of children, young people and adults involved in church is the responsibility of the whole church. As a leadership we endeavour to make our church a safe environment for all.

We will review this statement and our policy and procedures annually.

The following statement was agreed by the church leadership:

- We recognise that we all have a responsibility to help prevent the abuse and neglect of children and adults and to report any such abuse or neglect that we discover or suspect.
- We are committed to the safeguarding of children and adults and ensuring their well-being. We recognise that children and adults can be the victims of physical, sexual and emotional abuse, as well as financial and discriminatory abuse and other forms of harm such as exploitation and neglect.
- We endorse and adopt the policy, procedures and guidance set out in this safeguarding policy in accordance with governments' national legislation, statutory guidance and local safeguarding procedures, along with guidance issued by Elim nationally through the National Safeguarding Coordinator.

## **Working with Safeguarding Authorities**

- We recognise the role that the statutory safeguarding authorities (Social Services and the Police) have in investigating all suspicions and allegations or discovery of

child abuse and the abuse of adults and will cooperate fully with all agencies to protect those at risk of harm or abuse:

- Children’s Social Services (or equivalent) has lead responsibility for investigating all allegations or suspicions of abuse where there is a concern about a child.
- Adult Social Services (or equivalent) has lead responsibility for investigating all allegations or suspicions of abuse when concerned about the welfare of an adult.
- Where an allegation suggests that a criminal offence may have been committed then the police should be contacted as a matter of urgency.
- Having liaised with the statutory authorities please inform National Safeguarding coordinator, Sarah Bale.
- We will follow the requirements for UK legislation in relation to safeguarding children and adults and good practice recommendations.
- We will act in accordance with national and local safeguarding guidance such as laid out in Working Together to Safeguard Children 2018 and acknowledge that “safeguarding children is everyone’s responsibility” and that “everyone who comes into contact with children and families has a role to play”.
- We will liaise with the local statutory safeguarding partnerships such as the Local Safeguarding Children Board (LSCB), Safeguarding Adult Board (SAB) or any other local safeguarding mechanisms.
- We are committed to building constructive links with statutory and voluntary agencies involved in safeguarding and sharing relevant information.

### **Promoting a Healthy Church Culture**

- We respect the rights of children as described in the UN Convention on the Rights of the Child. We value and respect children and want to hear their voices.
- We accept the UN Universal Declaration of Human Rights and the International Covenant of Human Rights, which states that everyone is entitled to “all the rights and freedoms set forth therein, without distinction of any kind, such as race, colour, sex, language, religion, political or other opinion, national or social origin, property, birth or other status”.
- We understand the importance of creating a welcoming and inclusive, safe and healthy environment and are committed to ensuring that we meet the requirements



of the Equality Act 2010, implementing all other relevant legislation as part of safeguarding.

- We recognise the personal dignity and rights of adults and will ensure all our policies and procedures and practice guidance reflect this, so that adults can have access to every aspect of the life of our church.
- We are committed to supporting parents and families and ensuring that our church is a safe place for all.
- The church has appointed a Safeguarding Coordinator and a Deputy Safeguarding Coordinator as points of reference, to act on all allegations or suspicions of abuse in reporting to the statutory safeguarding authorities. In our commitment to openness, should anyone have a concern that our church or the Safeguarding Coordinator(s) have not dealt appropriately with a safeguarding concern we would encourage that person to make contact with Elim's National Safeguarding Coordinator or to make a direct referral to Social Services or the Police.

#### **Commitment to those Serving Children and Adults**

- We commit to providing safeguarding training and development opportunities for all our workers (paid and voluntary) and will regularly review the training needs. We will also support, resource, monitor and provide supervision to all those who undertake work with children or adults, and those in positions of trust.
- We also commit to providing induction training for all those working with children and adults.
- We take seriously our responsibility for ensuring that everyone is safe in our care and that their dignity and rights are maintained.

#### **Safeguarding under Specific Circumstances**

- We commit to supporting, listening to, and working towards healing for everyone affected; either directly or indirectly by any form of abuse.
- We are a welcoming church which recognises that in following the mission of the church we may have sexual offenders join us. In such circumstances we will talk with the person concerned, and with any safeguarding professional involved to ensure that their involvement in church does not compromise the safety and well-being of

children or adults. To ensure this we will take appropriate and proportionate measures, including asking the individual to adhere to a safeguarding agreement.

- We recognise the personal dignity and rights of adults who find themselves victims of forced marriage or modern slavery and will ensure all our policies and procedures reflect this.
- Where working outside of the UK, concerns will be reported to the International Missions Director who will liaise with the National Safeguarding Coordinator in addressing any safeguarding concerns following the Elim Missions safeguarding procedures. Where an allegation or suspicion of abuse is made against someone working with children, or adults, or is in a position of trust, then the safeguarding officer(s) will make contact with the Regional Leader and the National Safeguarding Coordinator for advice.

The Regional Leader, Paul Hudson can be contacted on:

[paul@northeastmidlands.org.uk](mailto:paul@northeastmidlands.org.uk) , 07792 426 592

The National Safeguarding Coordinator, Sarah Bale can be contacted on:

[safeguarding@elimhq.net](mailto:safeguarding@elimhq.net) or 07814783855

### **Working with Elim Nationally**

- Where the Safeguarding Coordinator(s) are unsure what action to take, then it is the expectation of the Leadership that advice will be sought from the National Safeguarding Coordinator at Elim International Centre, and that the Safeguarding Coordinator(s) would follow the mechanisms or actions recommended by Elim.
- Any contact with Social Services or any other Statutory Safeguarding authority must be declared to National Safeguarding Coordinator, Sarah Bale.
- A copy of our safeguarding policy has been lodged with the National Safeguarding Coordinator at Elim International Centre and all updates to the policy will be sent at least annually.

### **Safeguarding Policy**

- It is the expectation that all those working with children and with adults have access to the church safeguarding policy and will have read it and agreed to fully adhere to the policy, procedures and practice guidelines, as condition of continuing in their role.
- The safeguarding policy should also be available to parents, carers and all others within the church.

In providing this detailed statement about safeguarding children and adults within our church, in the services, groups and activities we provide, along with the interaction we have outside of these events, including through social media and other electronic communication means, we hope to demonstrate our commitment to ensuring the safety of all. We endeavour to provide a healthy and safe church culture where the welfare of the child, young person and adult is paramount.

Whilst recognising that the very nature of safeguarding means that we have to respond to allegations both sensitively and confidentially, this does not mean secretively. We strive to be open, transparent and accountable. This means seeking advice and liaising with Social Services, Police and other agencies as necessary.

Signed by or on behalf of the Leadership:

Signed:

Name:

Date:

## **Safeguarding Procedures:**

### **Safeguarding Awareness**

Child abuse or abuse against an adult can be a difficult and complex issue to understand. A person may abuse or neglect by inflicting harm or failing to prevent harm. Children and adults in need of protection may be abused within a family, an institution or a community setting. Very often the abuser is known or is in a trusted relationship with the child or adult. Research shows that abuse can be perpetrated by males and females, by adults and by children, as well as those in positions of trust and authority. Sadly, people in such positions have misused their power and authority within churches to abuse.

The four categories of child abuse are physical, emotional, sexual abuse and neglect. It is important to note that a child may be suffering from more than one form of abuse. Safeguarding professionals must assess if they need to intervene in order to protect a child and this is based on whether it is felt a child is suffering from, or likely to suffer from, significant harm. There are other forms of abuse (such as child sexual exploitation) which come under these four main headings when instigating a child protection plan.

Adults are in need of protection due to physical, sexual, psychological (which includes emotional abuse) and neglect (including self-neglect) as well as financial, institutional, discriminatory abuse, modern slavery, trafficking and domestic violence. Detailed definitions and signs and symptoms of abuse, are included in the appendices.

As a Leadership we will endeavour to ensure that children and adults are provided with information on where to get help and advice in relation to abuse, discrimination, bullying or any other matter of concern. As a leadership we recognise that for many victims/survivors of abuse, where the abuse has taken/takes place within the context of the church or by someone professing a Christian faith, it can have an impact on their spiritual development.

## **Safeguarding Coordinators**

The Leadership have appointed a Safeguarding Coordinator and a Deputy Safeguarding Coordinator to respond to any safeguarding concern or suspicion of abuse. The Leadership fully supports them in their role of acting in the best interest of the child or adult and reporting to the statutory authorities all allegations or suspicions of abuse.

### **Responding to allegations or suspicions of abuse**

All safeguarding concerns should be immediately reported to the **Safeguarding Coordinator** or **Deputy Safeguarding Coordinator** in the church. No one in receipt of a disclosure of abuse, or suspicion of abuse should investigate the matter.

As a Leadership we have nominated: *(NB: if you have a separate coordinator for adult and children please use the column on the right and specify which individual is coordinator for adults and which for children)*

Name: Sandra Andrew

Contact Details: 0121 501 3542

They are to act as our **Safeguarding Coordinator** on behalf of the church in dealing with any allegation or suspicion of abuse or neglect, including referring the matter on to the statutory authorities.

In the absence of the **Safeguarding Coordinator**, then the report should be made to the **Deputy Safeguarding Coordinator**: *(NB: if you have a separate deputy coordinator for adult and children please use the column on the right and specify which individual is deputy coordinator for adults and which for children)*

#### Hagley Location

Name: Jo Gregory

Contact Details: [jo.gregory@lifecentralchurch.org.uk](mailto:jo.gregory@lifecentralchurch.org.uk)

0121 501 3542

#### Rowley Location

Name: Simon Woodward

Contact Details: [simon.woodward@lifecentralchurch.org.uk](mailto:simon.woodward@lifecentralchurch.org.uk)

0121 501 3542

#### Halesowen Location (Children)

Name: Sam Hughes

Contact Details: [sam.hughes@lifecentralchurch.org.uk](mailto:sam.hughes@lifecentralchurch.org.uk)

0121 501 3542

#### Halesowen Location (Youth and Adults)

Name: Andy Hancock

Contact Details: [andy.hancock@lifecentralchurch.org.uk](mailto:andy.hancock@lifecentralchurch.org.uk)

0121 501 3542

In the absence of the **Safeguarding Coordinator** or **Deputy Safeguarding Coordinator**, seek advice from your Pastor or member of the Leadership Team, who will then seek regional support and contact the National Safeguarding Co-ordinator.

Where someone has passed information to the **Safeguarding Coordinator** or **Deputy Safeguarding Coordinator** and believe this has not been responded to appropriately, then they should make a direct referral to Social Services or the Police. As a Leadership we make this statement to demonstrate our commitment to safeguarding children and adults.

If unsure whether to report a matter to Social Services or the Police, advice should be sought from the National Safeguarding Coordinator.

## **Role of the Safeguarding Coordinator**

The **Safeguarding Coordinator** or **Deputy Safeguarding Coordinator** will collate and clarify the precise details of the allegation or suspicion of abuse and where abuse is suspected will pass this information onto the statutory authorities who have a legal duty to investigate.

Where the concern is about a child the **Safeguarding Coordinator** will contact Children's Social Services.

### Children's Social Services

Name: Dudley Council Multi-Agency Support Hub (MASH)

Contact Details: 0300 555 0050 (Mon-Fri 9-5)

Out of Hours (Emergency Duty Team): 0300 555 8574 (other times)

Where the concern is about an adult in need of protection the **Safeguarding Coordinator** will contact Adult Social Services.

### Adult Social Services

Name: Dudley Council Adult Safeguarding

Contact Details: 0300 555 0055 select option 1

Out of Hours (Emergency Duty Team): 0300 555 8574

For Birmingham, Sandwell, Staffordshire and Worcestershire details see Appendix H

Where concerned that a crime may have been committed, or where concerned about the immediate danger of a child or an adult then contact should be made to the Police dialling 999, or through making contact with the Police Child Protection Team.

Police Child Protection Team for Dudley, part of Dudley Multi-Agency Support Hub MASH

Contact details: 101 (extension 8516572)

For Birmingham, Sandwell, Staffordshire and Worcestershire details see Appendix H

**Practice Guidance:****Welcoming environment**

Our churches should be safe places for everyone; children and adults, where all feel welcomed, valued, respected and cared for. We can promote this by ensuring that our buildings are accessible, recognising the limitations that the design of some buildings create and addressing this, along with the acoustics and lighting. We should also be careful to use appropriate language and suitable vocabulary which can often reflect people's attitudes towards others.

Church is not simply meeting for collective worship on a Sunday, but can involve many different groups and activities, across the age range, throughout the week, and at different times day and night. We can work with children and young people through children's groups, Sunday school classes, youth meetings, communicating online through the use of text, social media, and app services. Our work with adults at risk of harm can include through foodbanks, money advice, homeless projects, luncheon clubs for older people and we can connect with young people and adults through Street Pastors and other community outreach projects. Our church activities are not confined solely to a church building and we can meet in people's homes for Bible reading or other activities. Church also involves camping, and residential or outdoor activities. We also provide pastoral care in people's homes and counselling support. With the various activities we are involved in as a church, it is important that we understand the safeguarding considerations and undertake risk assessments for the various activities, enforcing clear guidelines for all in positions of trust in church.

As a church working with children, young people and adults we wish to operate and promote good working practice. This will enable workers to run activities safely, develop good relationships and minimise the risk of false accusation.

**Safer recruitment**

**(preventing harm through screening to ensure only suitable people work with children and adults)**

As a Leadership we will ensure all workers are appointed, trained, supported and supervised in accordance with government guidance on safe recruitment.



This includes ensuring that:

- There is a written job description / person specification for the post
- Those applying have completed an application form and a self-declaration form
- Those short listed have been interviewed
- Safeguarding has been discussed at interview
- Written references have been obtained, and followed up where appropriate
- A criminal record check (Disclosure and Barring Service (DBS) check or equivalent) has been obtained in accordance with the position that the person has applied for, where necessary
- As a church we will comply with the Code of Practice requirements concerning the fair treatment of applicants and the handling of information
- Qualifications where relevant have been verified
- A suitable training programme is provided for the successful applicant
- The applicant has completed a probationary period
- The applicant will have access to our church safeguarding policy and knows how to report concerns to the **Safeguarding Coordinator**.

**Further details of safer recruitment can be found on ELIMNET.**

### **Codes of Conduct**

As a Leadership we are committed to supporting all workers and ensuring they receive support and supervision. All workers will be issued with a code of conduct towards children, young people and adults. A code of conduct towards children, young people and adults should be drawn up in consultation with the **Safeguarding Coordinator** and activity leaders which all workers agree to follow. It is important there is a culture of dignity and respect towards those being cared for. This can be achieved by workers:

- understanding our safeguarding policy and good working practice
- listening to children, young people and adults
- respecting boundaries and the privacy of those being cared for
- knowing how to deal with issues of discipline in line with our code of conduct

### **Providing pastoral care**

It is important that anyone seeking pastoral care knows exactly what to expect in terms of good conduct, that those caring for them are accountable and that any boundaries set are respected.

In addition:

- Those providing pastoral care should avoid any behaviour that may give the impression of favouritism
- Workers should be aware of the limits of their own ability and competence and seek further help when dealing with situations outside their expertise
- There should be clear guidelines where workers are involved in any aspect of personal finance such as collecting benefits or pension or going shopping for someone to ensure financial integrity

### **Training and Supervision**

All workers (whether paid or voluntary), will be provided with appropriate training and given the opportunity to develop their skills so that they feel supported and valued in the work they undertake. As a Leadership, we commit to ensuring all workers are supervised (where possible by a named individual who arranges regular meetings) where concerns or issues

can be raised, work related or personal. It is also the role of the supervisor to ensure all training needs are met.

### **Team Meetings**

The leadership recognises the importance of team meetings. These should be convened on a regular basis and should provide an opportunity for ideas and issues to be aired, concerns expressed and feedback given.

### **Confidentiality**

Every effort should be made to ensure that confidentiality is preserved; this needs to be balanced with the need to protect a person who has been or is at risk of abuse. All those working with adults must be clear that it is not possible to keep information about suspected or actual abuse confidential. In order to protect the adult at risk of harm, or others at potential risk means that this will need to be reported to the **Safeguarding Coordinator**.

### **Self-determination and independence**

Adults have a right to self-determination and independence. No one should be making decisions for anyone except in particular circumstances. Where, for example, the mental capacity of the individual is impaired, where a crime is being committed, or where children may be harmed as a result of adults in action then the matter will need to be reported to the **Safeguarding Coordinator**. Sometimes an adult can put themselves in situations which others would judge to be inappropriate or abusive in the exercising of their own choice and autonomy. In such circumstances, the **Safeguarding Coordinator** should seek advice from the National Safeguarding Co-ordinator, where unsure what actions to take.

### **Supporting those affected by abuse**

As a leadership we are committed to offering pastoral care and support to individuals who are part of our church or who we have contact with who may have been affected by abuse, working with statutory agencies as appropriate.

We recognise that pastoral care needs differ from person to person and by the nature of the harm that a person has endured. Those affected by abuse are often dealing with complex

issues, recognising this, we offer pastoral care and support and would seek (providing the individual has given permission) to contact counselling agencies, as required.

### **Departments and activities within Elim**

All departments and activities within Elim are expected to adhere to the national safeguarding policy and to develop safeguarding guidelines (procedures and practice guidance) for the protection of children and adults at risk of harm. This includes, but is not limited to; Elim International Missions, Regents Theological College, Limitless Children's and Youth Ministry (including festivals and national and youth events), all Regional Elim Family Gatherings (River Camp, Ignite and all other Elim festivals and camps).

Wherever an activity is undertaken on behalf of Elim involving children, young people or adults at risk, suitable safeguarding arrangements should be followed.

Where working in partnership with other churches or groups e.g. ecumenical youth event, the Elim church should ensure there is a suitable safeguarding policy, which includes reporting to the National Safeguarding Coordinator in instances where safeguarding allegations are made against an Elim worker (whether in paid or voluntary employment).

### **Responsibilities of Churches**

Each Elim church must:

- Adopt and implement a safeguarding policy and related procedures and practice guidelines
- Ensure that all those who are in a position of authority or trust or are authorised to work with children, young people or adults have been safely recruited to their role. This means they have been provided with support and supervision in undertaking their roles. All workers also need to have undertaken annual Safeguarding training and been given a copy of the church Safeguarding policy.
- Appoint a Safeguarding Coordinator and a Deputy Safeguarding Coordinator

The Safeguarding Coordinator should:

- 
- Report all allegations, suspicions or discovery of abuse to the statutory safeguarding authorities concerned with child protection and adult protection e.g. Children's Social Services, Adult Social Services, the Police.
  - Inform and/or seek advice from the National Safeguarding Coordinator about any safeguarding concern
  - Inform the Regional leader about any safeguarding concern
  - Contact the National Safeguarding Coordinator about any safeguarding matter that requires contact with the church insurers.
  - Report serious incidents of abuse or neglect to the National Safeguarding Coordinator, as a requirement of the Charity Commission and other charity regulators where a church is operating under the Elim charity number.
  - Contact the National Safeguarding Coordinator, along with the statutory authorities where an allegation or suspicion of abuse involves a church worker.
    - Where the worker is engaged in 'regulated activity' the Designated Coordinator from the Local Authority (LADO) [or similar person across UK] will need to be contacted.
    - Where a worker with children or adults is removed from regulated activity because of risk of harm, or resigns or retires prior to dismissal, or is dismissed then a referral to the DBS (or Access NI, Disclosure Scotland) must be made for barring consideration.
  - Liaise with Police Public Protection Teams, MAPPA agencies etc. and contact the National Safeguarding when working with someone who may present as a current risk to children or adults e.g. a sex offender attending church.

Each Elim Church Incorporated should:

- Follow the guidance issued above, and additionally, report directly to the Charity Commission, or equivalent charity regulator, where dealing with a safeguarding issue deemed to be a serious incident. Also, they should contact the national safeguarding coordinator, seek advice and make them aware of the safeguarding concern.

## **Elim International Missions**

This Elim safeguarding policy applies to all our Elim International Missions workers and volunteers overseas; whether planting or establishing churches within local communities, visiting on short-term mission or placed as a long-term missionary in our many locations around the world.

Whilst recognising that the cultures, within which international missions are often working may adopt different standards to the care and treatment of children, young people and adults at risk, the standards and principles adopted within the UK are expected to apply in international mission situations. The maltreatment of children and young people is contrary to Biblical values and practices and therefore cannot be tolerated.

Due regard will need to be given to the cultures within which activities are taking place, however under the expectation of applying UK standards to the practice of missions' workers, some guidance may be useful.

Workers should:

- be able to recognise situations which may present risks
- plan and organise the work and workplace so as to minimise risks as far as possible and be visible to other adults when working and talking with children
- take particular care for the needs of children with disabilities and vulnerable children as research has shown that abuse can often go unrecognised and unreported due to people's attitudes and assumptions about disability
- ensure that others know where interviews of children are taking place and that someone else is around in the building

Workers should **not**:

- spend excessive time alone with children
- take children to their personal home, or stay overnight, especially where they will be alone with you
- leave any person under 18 in charge of any children of any age, nor should children or young people attending any group be left alone at any time
- hit or otherwise physically assault children
- develop physical/sexual relationships with children

- develop relationships with children which could in any way be deemed exploitative or abusive
- use language, make suggestions or offer advice, which is inappropriate, offensive or abusive.
- act in ways intended to shame, humiliate, belittle or degrade children, or otherwise perpetrate any form of emotional abuse, discriminate against, show differential treatment, or favour particular children to the exclusion of others.

### **Responding & Reporting Mechanisms**

The Elim International Director acts as the Designated Safeguarding Coordinator for all mission related activities. They are responsible for safe recruitment including DBS disclosures and for ensuring that applicants are fully apprised of the safeguarding policy. All incidents, allegations or concerns must be reported to the Director who will then liaise with the appropriate authorities to ensure good practice is followed in relation to the reporting of any allegations of abuse. The Designated Safeguarding Coordinator will seek advice from the National Safeguarding Coordinator about all safeguarding concerns.

Where an allegation is made against a worker (whether located long-term on mission or visiting on short-term mission), the Director must be informed immediately. They will then ensure that appropriate action will be taken including conveying a Crisis Management Team, as appropriate.

If an allegation is made against a worker, that worker must be removed from their duties or prevented from having any further contact with children and young people or adults at risk immediately whilst necessary action is taken.

Due regard must always be taken of the laws and frameworks in place within any country in which Elim operates. In many cases, practice, values and beliefs in relation to safeguarding will be different to the UK. However, care must always be taken to ensure that the rights of the individuals concerned are upheld (see the UN Convention on Human Rights and UN Convention on the Rights of the Child).

The local and legal context must be taken into consideration when responding to any Safeguarding situation to ensure that actions do not increase the risk of harm to the child,

alleged perpetrator, the mission and its personnel, or to the local church. It needs to be considered whether a report of a concern will be responded to appropriately e.g. does the country have Safeguarding legislation in place?

Where repatriation of the alleged perpetrator is deemed necessary then the safeguarding authorities within the UK should be informed.

### **Regents Theological College**

Regents Theological College (RTC) provides a gateway to the ministry for many who then become Elim church leaders and pastors. Among the many courses that are taught, there are a number that are vocational or ministerial in their focus and delivery, often involving placements in places of worship, missions and other faith-based organisations and activities.

These vocational courses might confer upon graduates the expectation or opportunity to work in places where they might be in contact with children and adults at risk of harm. Therefore, all potential students will be required to have a DBS criminal record check. Character references and a DBS disclosure will be required for all prospective students once given a conditional offer to study at RTC.

Where information is declared on a self-declaration form, or is provided on the DBS certificate, the National Safeguarding Coordinator will undertake a risk assessment based on the information to determine suitability of the person prior to final acceptance onto the course.

### **Elim Conference Centre**

Elim Conference Centre offers accommodation and events to a variety of different groups. This can include children and adults at risk and range from individuals booking overnight accommodation to organised groups hiring the conference facilities.

Any safeguarding concern involving delegates and guests using the Conference Centre should be reported immediately to the National Safeguarding Coordinator.



## Appendix A: Terminology

This safeguarding policy covers children and adults. A child is defined as someone under the age of 18, this includes children and young people. As churches operate their children's and youth groups with different age ranges, this policy is not prescriptive and uses the general term of 'child' to describe both children and young people.

An adult is generally defined as someone over the age of 18. The different constituent parts of the UK can have country specific legislation e.g. the age of criminal responsibility. In Scotland, for example, an 'adult at risk' is defined as someone over the age of 16. In England, for concerns about domestic abuse, the legislation is for those 16 and over.

As adult safeguarding systems have developed there has been a move away from using the term 'vulnerable adults', whilst recognising that certain pieces of legislation (e.g. the Police Act 1997) and different agencies use this term. The term 'adult at risk' is generally now replacing the previously used term 'vulnerable adult' (focusing on the situation rather than the characteristics of the adult themselves). The label 'vulnerable adult' may wrongly imply that some of the fault for any abuse lies with the abused adult. The Care Act 2014 does not use the word vulnerable, but rather an 'adult with care and support needs', who is, or is at risk of abuse or neglect. Other descriptions include 'adults at risk' (the Adult Support and Protection (Scotland) Act 2007, Adult Safeguarding Prevention and Protection in Partnership, July (DHSSPS)) and 'adults in need of protection'. 'Adults' is used in this policy to mean adults in need of protection.

This safeguarding policy will use the various terms interchangeably except where referring to specific legislation or government guidance.

Safeguarding is a wider term and encompasses: when referring to children; child protection and the welfare of a child; and when referring to adults; adult protection and welfare. Defining who is an 'adult at risk', or an 'adult in need of care and protection' can be complex as there are many different definitions within legislation; reaching a certain age or having a disability does not necessarily mean that an individual is vulnerable. For example, determining who qualifies for a criminal record disclosure check through the Disclosure and Barring Service (DBS) is based on a specific definition of who is a vulnerable adult.

The term 'Leadership' is used to refer to the governance arrangement within an Elim church; this may be Pastors and Elders, or Senior Leader and team.

## **Appendix B: Statutory Definitions of Abuse (Children)**

Abuse and neglect are forms of maltreatment of a child. Somebody may abuse or neglect a child by inflicting harm, or by failing to act to prevent harm. Children may be abused in a family or in an institutional or community setting; by those known to them or, more rarely, by a stranger. They may be abused by an adult or adults, another child or children.

Child protection legislation throughout the UK is based on the United Nations Convention on the Rights of the Child. Each nation within the UK has incorporated the convention within its legislation and guidance.

The definitions of abuse below operate in England based on the government guidance 'Working Together to Safeguard Children: a guide to inter-agency working to safeguard and promote the welfare of children' (H M Government July 2018).

### **Abuse:**

A form of maltreatment of a child. Somebody may abuse or neglect a child by inflicting harm, or by failing to act to prevent harm. Children may be abused in a family or in an institutional or community setting by those known to them or, more rarely, by others. Abuse can take place wholly online, or technology may be used to facilitate offline abuse. Children may be abused by an adult or adults, or another child or children.

### **Physical Abuse:**

A form of abuse which may involve hitting, shaking, throwing, poisoning, burning or scalding, drowning, suffocating or otherwise causing physical harm to a child. Physical harm may also be caused when a parent or carer fabricates the symptoms of, or deliberately induces, illness in a child.

### **Emotional abuse:**

The persistent emotional maltreatment of a child such as to cause severe and persistent adverse effects on the child's emotional development. It may involve conveying to a child that they are worthless or unloved, inadequate, or valued only insofar as they meet the needs of another person. It may include not giving the child opportunities to express their views, deliberately silencing them or 'making fun' of what they say or how they communicate. It may feature age or developmentally inappropriate expectations being

imposed on children. These may include interactions that are beyond a child's developmental capability, as well as overprotection and limitation of exploration and learning, or preventing the child participating in normal social interaction. It may also involve seeing or hearing the ill-treatment of another individual. It could involve serious bullying (including cyber bullying), frequently causing children to feel frightened or in danger, as well as the exploitation or corruption of children. Some level of emotional abuse is involved in all types of maltreatment of a child, though it may occur alone.

**Sexual abuse:**

Whether or not the child is aware of what is happening or not involves forcing or enticing a child or young person to take part in sexual activities. It does not necessarily involve a high level of violence. The activities may involve physical contact, including assault by penetration (for example, rape or oral sex) or non-penetrative acts such as masturbation, kissing, rubbing and touching outside of clothing. They may also include non-contact activities, such as involving children in looking at, or in the production of, sexual images, watching sexual activities, encouraging children to behave in sexually inappropriate ways, or grooming a child in preparation for abuse. Sexual abuse can take place online and technology can be used to facilitate offline abuse. Sexual abuse is not solely perpetrated by adult males, women can also commit acts of sexual abuse, as can other children.

**Neglect:**

The persistent failure to meet a child's basic physical and/or psychological needs, likely to result in the serious impairment of the child's health or development. Neglect may occur during pregnancy as a result of maternal substance abuse. Once a child is born, neglect may involve a parent or carer failing to:

- provide adequate food, clothing and shelter (including exclusion from home or abandonment)
- protect a child from physical and emotional harm or danger
- ensure adequate supervision (including the use of inadequate care-givers)
- ensure access to appropriate medical care or treatment

It may also include neglect of, or unresponsiveness to, a child's basic emotional needs.

**Child Sexual Exploitation:**

Child sexual exploitation is a form of child sexual abuse. It occurs where an individual or group takes advantage of an imbalance of power to coerce, manipulate or deceive a child or young person under the age of 18 into sexual activity (a) in exchange for something the victim needs or wants, and/or (b) for the financial advantage or increased status of the perpetrator or facilitator. The victim may have been sexually exploited even if the sexual activity appears consensual. Child sexual exploitation does not always involve physical contact; it can also occur through the use of technology.

**Extremism:**

Extremism goes beyond terrorism and includes people who target the vulnerable, including the young, by seeking to sow division between communities on the basis of race, faith or denomination. Justify discrimination towards women and girls; persuade others that minorities are inferior; or argue against the primacy of democracy and the rule of law in our society.

Extremism is defined in the Counter Extremism Strategy 2015 as the vocal or active opposition to our fundamental values, including the rule of law, individual liberty and the mutual respect and tolerance of different faiths and beliefs. We also regard calls for the death of members of our armed forces as extremist.

## **Appendix C: Signs and Symptoms of Abuse (Children)**

The following signs could be indicators that abuse has taken place but should be considered in context of the child's whole life.

### **Physical**

- Injuries not consistent with the explanation given for them
- Injuries that occur in places not normally exposed to falls, or usual children's activities
- Injuries that have not received medical attention
- Reluctance to change for, or participate in, games or swimming
- Repeated urinary infections or unexplained tummy pains
- Bruises on babies, bites, burns, fractures which do not have an accidental explanation
- Cuts/scratches/substance abuse

### **Sexual**

- Any allegations made concerning sexual abuse
- Excessive preoccupation with sexual matters and detailed knowledge of adult sexual behaviour
- Age-inappropriate sexual activity through words, play or drawing
- Child who is sexually provocative or seductive with adults
- Inappropriate bed-sharing arrangements at home
- Severe sleep disturbances with fears, phobias, vivid dreams or nightmares, sometimes with overt or veiled sexual connotations
- Eating disorders, such as anorexia and bulimia

### **Emotional**

- Changes or regression in mood or behaviour, particularly where a child withdraws or becomes clinging
- Depression, aggression or extreme anxiety
- Nervousness or frozen watchfulness

- Obsessions or phobias
- Sudden under-achievement or lack of concentration
- Inappropriate relationships with peers and/or adults
- Attention-seeking behaviour
- Persistent tiredness
- Running away, stealing or lying

### **Neglect**

- Under nourishment, failure to grow, constant hunger, stealing or gorging food, untreated illnesses
- Inadequate care

## **Appendix D: Statutory Definitions of Abuse (Adults)**

Safeguarding Adults is defined in the Care Act 2014 - Chapter 14 Safeguarding and the Care and Support Statutory Guidance Issued under the Care Act 2014 (June 2014).

*The legislation is relevant across England and Wales but on occasions applies only to local authorities in England.*

The Safeguarding duties apply to an adult who:

- has need for care and support (whether or not the local authority is meeting any of those needs) and;
- is experiencing, or at risk of, abuse or neglect; and
- as a result of those care and support needs is unable to protect themselves from either the risk of, or the experience of abuse or neglect.

### **Physical abuse:**

Including assault, hitting, slapping, pushing, misuse of medication, restraint or inappropriate physical sanctions.

### **Domestic violence:**

Including psychological, physical, sexual, financial, emotional abuse; so called 'honour' based violence.

### **Sexual abuse:**

Including rape, indecent exposure, sexual harassment, inappropriate looking or touching, sexual teasing or innuendo, sexual photography, subjection to pornography or witnessing sexual acts, indecent exposure and sexual assault or sexual acts to which the adult has not consented or was pressured into consenting.

### **Psychological abuse:**

Including emotional abuse, threats of harm or abandonment, deprivation of contact, humiliation, blaming, controlling, intimidation, coercion, harassment, verbal abuse, cyber bullying, isolation or unreasonable and unjustified withdrawal of services or supportive networks.



**Financial or material abuse:**

Including theft, fraud, internet scamming, coercion in relation to an adult's financial affairs or arrangements, including in connection with wills, property, inheritance or financial transactions, or the misuse or misappropriation of property, possessions or benefits.

**Modern slavery:**

Encompasses slavery, human trafficking, forced labour and domestic servitude. Traffickers and slave masters use whatever means they have at their disposal to coerce, deceive and force individuals into a life of abuse, servitude and inhumane treatment.

**Discriminatory abuse:**

Including forms of harassment, slurs or similar treatment because of race, gender and gender identity, age, disability, sexual orientation or religion.

**Organisational abuse:**

Including neglect and poor care practice within an institution or specific care setting such as a hospital or care home or in relation to care provided in one's own home. This may range from one off incidents to on-going ill-treatment. It can be through neglect or poor professional practice as a result of the structure, policies, processes and practices within an organisation.

**Neglect and acts of omission**

Including ignoring medical, emotional or physical care needs, failure to provide access to appropriate health, care and support or educational services, the withholding of the necessities of life, such as medication, adequate nutrition and heating.

**Self-neglect:**

This covers a wide range of behaviour neglecting to care for one's personal hygiene, health or surroundings and includes behaviour such as hoarding. Incidents of abuse may be one-off or multiple and affect one person or more.

## **Appendix E: Signs of Possible Abuse (Adults)**

### **Physical abuse**

- History of unexplained falls, fractures, bruises, burns or minor injuries
- Signs of under or over use of medication and/or medical problems left unattended
- Any injuries not consistent with the explanation given for them
- Bruising and discolouration - particularly if there is a lot of bruising of different ages and in places not normally exposed to falls, rough games etc.
- Recurring injuries without plausible explanation
- Loss of hair, loss of weight and change of appetite
- Person flinches at physical contact and/or keeps fully covered, even in hot weather
- Person appears frightened or subdued in the presence of a particular person or people

### **Domestic violence**

- Unexplained injuries or 'excuses' for marks or scars
- Controlling and/or threatening relationship including psychological, physical, sexual, financial, emotional abuse, so called 'honour' based violence and Female Genital Mutilation.

### **Sexual abuse**

- Pregnancy in a woman who lacks mental capacity or is unable to consent to sexual intercourse
- Unexplained change in behaviour or sexually explicit behaviour
- Torn, stained or bloody underwear and/or unusual difficulty in walking or sitting
- Infections or sexually transmitted diseases
- Full or partial disclosures or hints of sexual abuse
- Self-harming
- Emotional distress
- Mood changes
- Disturbed sleep patterns

### **Psychological abuse**

- Alteration in psychological state e.g. withdrawn, agitated, anxious or tearful
- Intimidated or subdued in the presence of a carer
- Fearful, flinching or frightened of making choices or expressing wishes
- Unexplained paranoia
- Changes in mood, attitude and behaviour, excessive fear or anxiety
- Changes in sleep pattern or persistent tiredness
- Loss of appetite
- Helplessness or passivity
- Confusion or disorientation
- Implausible stories and attention seeking behaviour
- Low self-esteem

### **Financial or material abuse**

- Disparity between assets and living conditions
- Unexplained withdrawals from accounts or disappearance of financial documents or loss of money
- Sudden inability to pay bills or getting into debt
- Carers or professionals fail to account for expenses incurred on a person's behalf
- Recent changes of deeds or title to property
- Missing personal belongings
- Inappropriate granting and/or use of Power of Attorney

### **Modern slavery**

- Physical appearance; unkempt, inappropriate clothing, malnourished
- Movement monitored, rarely alone, travel early or late at night to facilitate working hours
- Few personal possessions or identity documents
- Fear of seeking help or trusting people

### **Discriminatory abuse**

- Inappropriate remarks, comments or lack of respect
- Poor quality or avoidance of care
- Low self-esteem
- Withdrawn
- Anger
- Person puts themselves down in terms of their gender or sexuality
- Abuse may be observed in conversations or reports by the person of how they perceive themselves

### **Institutional Abuse**

- Low self-esteem
- Withdrawn
- Anger
- Person puts themselves down in terms of their gender or sexuality
- Abuse may be observed in conversations or reports by the person of how they perceive themselves
- No confidence in complaints procedures for staff or service users
- Neglectful or poor professional practice

### **Neglect and acts of omission**

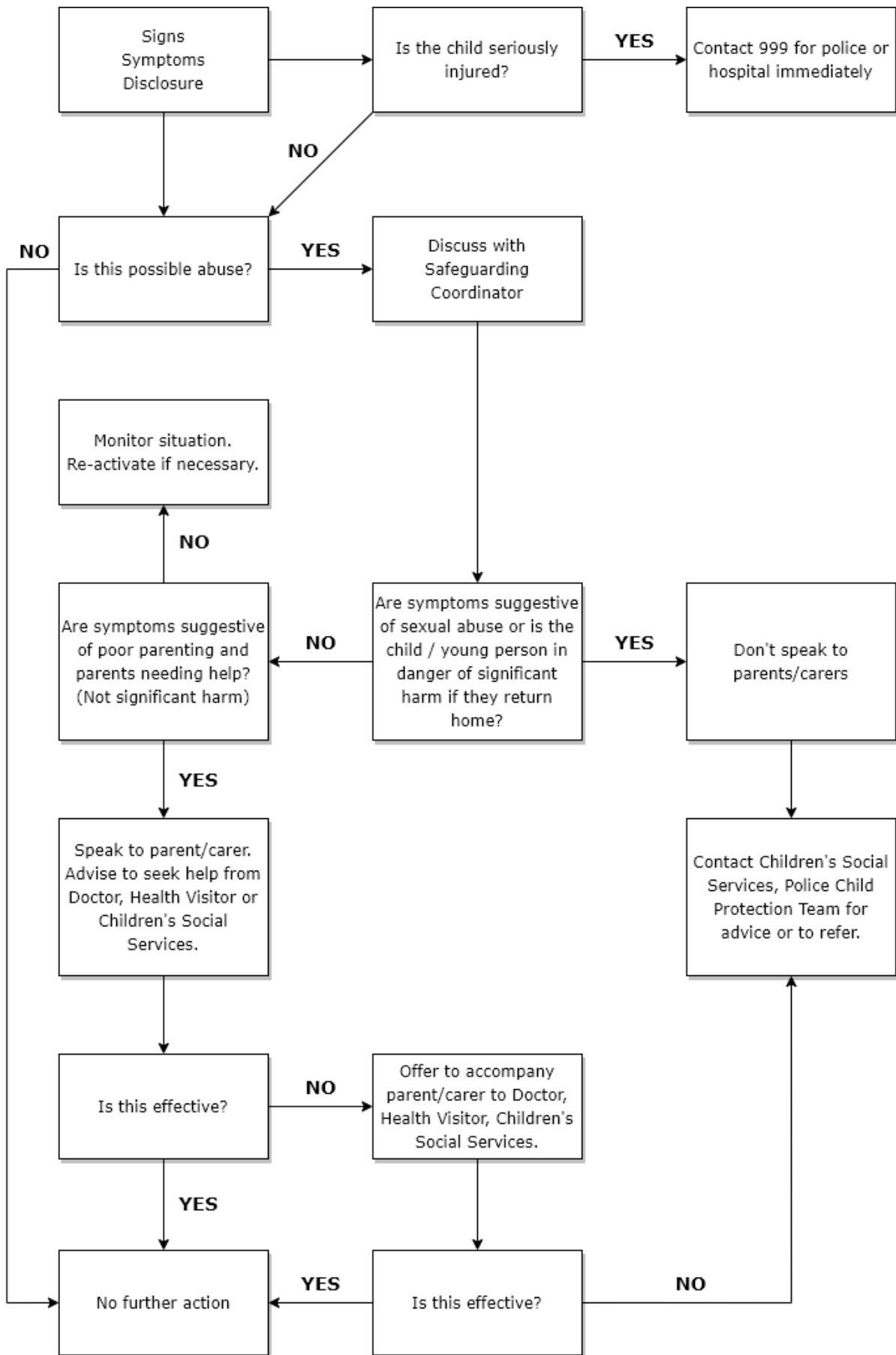
- Deteriorating despite apparent care
- Poor home conditions, clothing or care and support
- Lack of medication or medical intervention

### **Self-neglect**

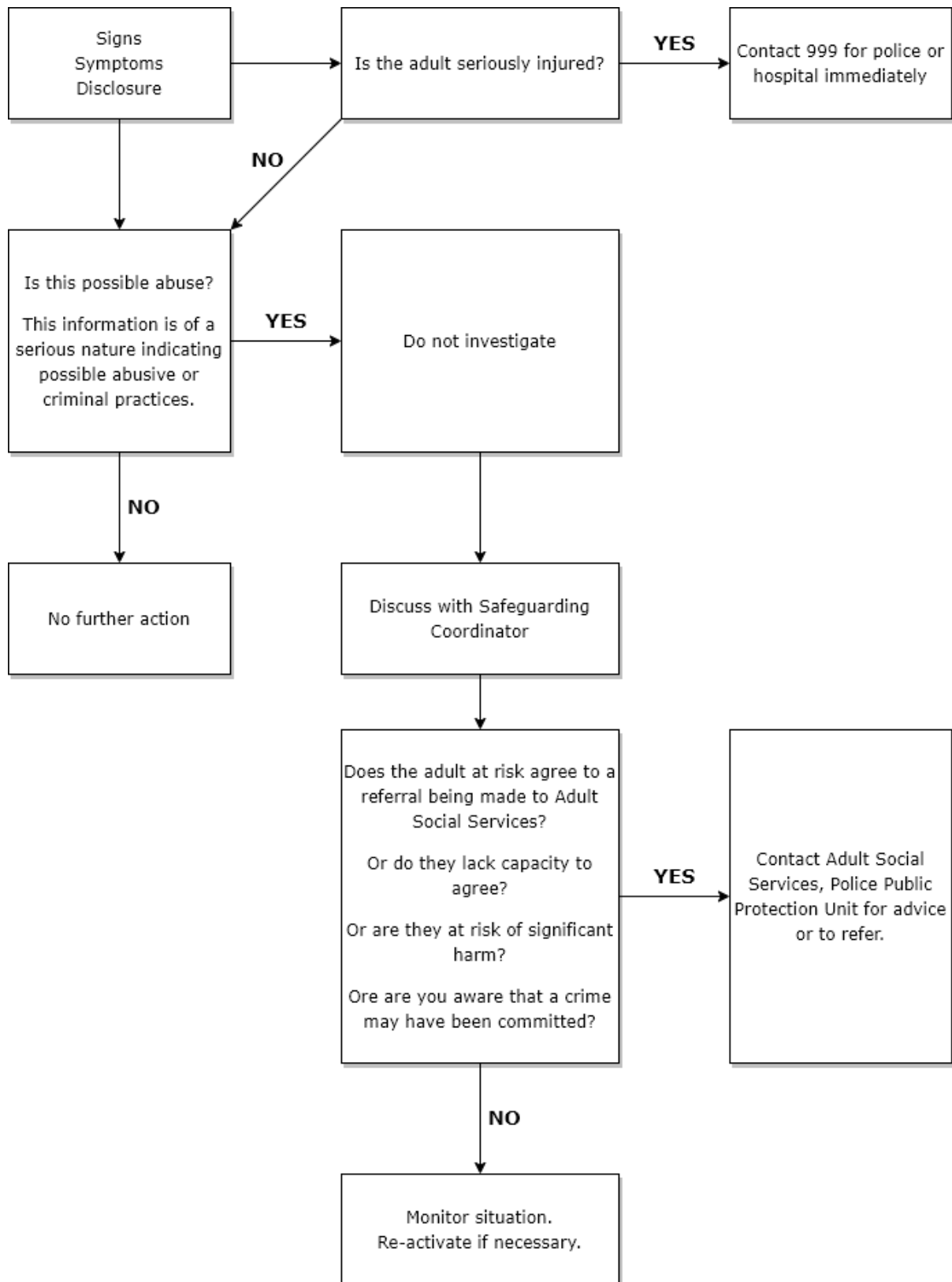
- Hoarding inside or outside a property
- Neglecting personal hygiene or medical needs
- Person looking unkempt or dirty and has poor personal hygiene
- Person is malnourished, has sudden or continuous weight loss, is dehydrated, is constantly hungry, stealing or gorging on food
- Person is dressed inappropriately for the weather conditions
- Dirt, urine or faecal smells in a person's environment

- Home environment does not meet basic needs (for example, no heating or lighting)
- Depression

## **Appendix F: Responding to Safeguarding Concerns (Children)**



**Appendix G: Responding to Safeguarding Concerns (Adults)**





## **Appendix H: Contact Details for Birmingham, Dudley, Sandwell, Staffordshire and Worcestershire**

### **Birmingham**

The Local Safeguarding Partners (Local Safeguarding Children Board or equivalent) for protecting children can be contacted:

Name: Birmingham Children's Trust  
Children's Advice and Support Service

Contact Details: 0121 303 1888 (Mon-Thurs 8:45-5:15, Fri 8:45-4:15)

Out of Hours Emergency 0121 675 4806 (other times)

The Safeguarding Adults Board (or equivalent) can be contacted:

Name: Birmingham City Council

Contact Details: 0121 303 1234

Out of Hours Emergency if no reply on the number above refer to the web link below

More information can be found at:

[https://www.birmingham.gov.uk/info/20019/children\\_young\\_people\\_and\\_families/602/who\\_to\\_contact\\_if\\_you\\_re\\_worried\\_about\\_a\\_vulnerable\\_adult\\_or\\_child](https://www.birmingham.gov.uk/info/20019/children_young_people_and_families/602/who_to_contact_if_you_re_worried_about_a_vulnerable_adult_or_child)

Police Child Protection Team for Birmingham (West Midlands Police)

Contact details: 101 (extension 8036501)  
birmingham.mash@westmidlands.pnn.police.uk

Details checked 01/09/20

## Dudley

The Local Safeguarding Partners (Local Safeguarding Children Board or equivalent) for protecting children can be contacted:

Name: Dudley Council Multi-Agency Support Hub (MASH)

Contact Details: 0300 555 0050 (Mon-Fri 9-5)

Out of Hours Emergency 0300 555 8574

The Safeguarding Adults Board (or equivalent) can be contacted:

Name: Dudley Council Adult Safeguarding

Contact Details: 0300 555 0055 select option 1

Out of Hours Emergency 0300 555 8574

More information can be found at:

<https://safeguarding.dudley.gov.uk/report-it/>

Police Child Protection Team for Dudley, part of Dudley Multi-Agency Support Hub MASH,  
(West Midlands Police)

Contact details: 101 (extension 8516572)

Details checked 01/09/20

## **Sandwell**

The Local Safeguarding Partners (Local Safeguarding Children Board or equivalent) for protecting children can be contacted:

Name: Sandwell Access for Children's Social Care

Contact Details: 0121 569 3100

Out of Hours Emergency 0121 569 3100

More information can be found at:

[http://www.sandwell.gov.uk/info/200219/children/2177/report\\_a\\_child\\_at\\_risk](http://www.sandwell.gov.uk/info/200219/children/2177/report_a_child_at_risk)

The Safeguarding Adults Board (or equivalent) can be contacted:

Name: Sandwell Metropolitan Borough Council

Contact Details: 0121 569 2266 (Mon-Thurs 9:00-5:30, Fri 9:00-5:00)

Out of Hours Emergency 0121 569 2355

More information can be found at:

[http://www.sandwell.gov.uk/info/200216/adults\\_and\\_older\\_people/2209/report\\_adult\\_abuse](http://www.sandwell.gov.uk/info/200216/adults_and_older_people/2209/report_adult_abuse)

Police Child Protection Team for Sandwell (West Midlands Police)

Contact details: 0845 113 5000

or try 101 (extension 8513000 or 8116001)

Details checked 01/09/20

## Staffordshire

The Local Safeguarding Partners (Local Safeguarding Children Board or equivalent) for protecting children can be contacted:

Name: Staffordshire County Council  
First Response Team

Contact Details: 0800 1313 126 (Mon-Thurs 8:30-5:00, Fri 8:30-4:30)

Out of Hours Emergency 0345 604 2886

More information can be found at:

<https://www.staffordshire.gov.uk/Care-for-children-and-families/childprotection/First-Response.aspx>

The Safeguarding Adults Board (or equivalent) can be contacted:

Name: Staffordshire County Council  
First Response Team

Contact Details: 0345 604 2719 (Mon-Thurs 8:30-5:00, Fri 8:30-4:30)

Out of Hours Emergency 0345 604 2886

More information can be found at:

<https://www.staffordshire.gov.uk/Care-for-all-ages/reportabuse.aspx>

Police Child Protection Team for Staffordshire Police

Contact details: 101

Details checked 01/09/20

## **Worcestershire**

The Local Safeguarding Partners (Local Safeguarding Children Board or equivalent) for protecting children can be contacted:

Name: Worcesterstershire County Council  
Family Front Door

Contact Details: 01905 822 666 (Mon-Thurs 9:00-5:00, Fri 9:00-4:30)

Out of Hours Emergency 01905 768 020

More information can be found at:

<http://www.worcestershire.gov.uk/safeguardingchildren/>

The Safeguarding Adults Board (or equivalent) can be contacted:

Name: Worcesterstershire County Council  
Access Centre

Contact Details: 0845 607 2000

Out of Hours Emergency if no reply on the number above refer to the web links below

More information can be found at:

<http://www.worcestershire.gov.uk/wsab>

More information about both children and adults can be found at:

<https://www.worcester.gov.uk/safeguarding>

Police Child Protection Team for Worcesterstershire (West Mercia Police)

Contact details: 101  
(or try 0300 333 3000)

Also see: [https://www.westmercia.police.uk/child\\_protection](https://www.westmercia.police.uk/child_protection)

Details checked 01/09/20

## Appendix I: Other Useful Contact Details

### National Safeguarding Coordinator

Name: Sarah Bale  
Work Number: 01684 588 913  
Mobile Number: 07814 783 855  
Email: [sarah.bale@elimhq.net](mailto:sarah.bale@elimhq.net) or [safeguarding@elimhq.net](mailto:safeguarding@elimhq.net)

### International Missions Director

Name: Iain Hesketh  
Mobile Number: 07912 292 672  
Email: [iain.hesketh@elimhq.net](mailto:iain.hesketh@elimhq.net)

### Regional Leader

Name: Paul Hudson  
Mobile Number: 07792 426 592  
Email: [paul@northeastmidlands.org.uk](mailto:paul@northeastmidlands.org.uk)

### thirtyone:eight (formerly CCPAS: Churches Child Protection Advisory Service)

Helpline: 0303 003 1111  
Web: <https://thirtyoneeight.org/>

Details checked 01/09/20